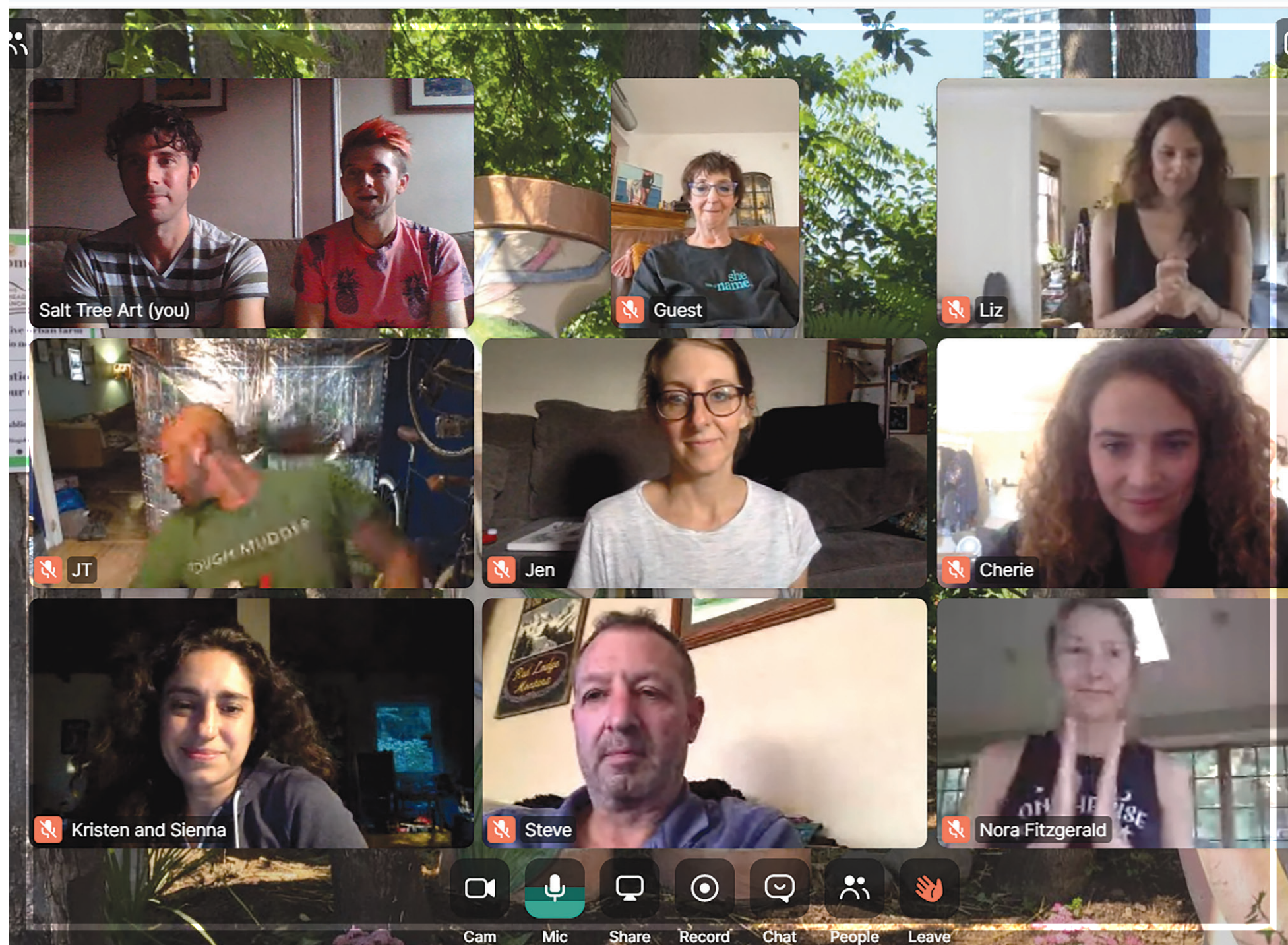


branching out

2020 ANNUAL REPORT



The Salt Tree
Charitable Trust



THROUGH THE GLOBAL UNCERTAINTIES AND HARDSHIPS OF 2020, Salt Tree Art persisted with our mission to create rich community spaces that unite arts and ecology in unexpected, educational, and inspiring ways. We found inspiration in our community's commitment to the arts – continuing to connect and celebrate through dance, sculpture, painting, illustration, poetry, and so many other creative practices. We learned from each other – producing new opportunities for environmental education. And we found ourselves called upon to enter unexpected spaces – leveraging our organization's resources and skills in support of our neighbors and our fellow artists.

This was a year of firsts for our organization – our first grant program as we supported environmental artists impacted by COVID-19, our first live broadcast as we took our annual Earth Day dance online, our first digital festivals as we brought puppetry and pollinators to international audiences – and throughout these new experiences, we were privileged to have your support.

Your support allowed us to deliver a full season of innovative programs despite all of the year's challenges. Your support gave us the power to respond to our communities quickly and impactfully in moments of urgent need. And your support positioned us to launch our capital campaign project in 2021, fulfilling the organization's original vision of establishing a permanent, physical space dedicated to environmental art.

We are excited to share this 2020 annual report with you. We are proud of this year's achievements, and we are incredibly grateful to have you with us for the exciting year ahead.

With our deepest thanks,
The Board of Trustees for the Salt Tree Charitable Trust

Michael Hollis

Liz McCabe

Brian Soliwoda





building our community.

With **34 artists** and creative partners, nearly **1,500 volunteer hours**, and over **100 contributors** and sponsors, our community of support flourished, allowing us to produce a full season of events and eco-art activations.



launching a digital platform.

From e-festivals, to live broadcasts, to online exhibitions, to remote learning tools, Salt Tree Art entered the digital world in earnest this season. With **32 different programs** throughout the year, we brought the environmental arts online in 2020.



expanding our portfolio.

Salt Tree Art entered new spaces in 2020. We issued our **first grants to artists**, we explored **eco-puppetry** as a new discipline for the puppetry arts, we produced our first **documentary film**, and we hosted an **international beekeeping event online!**



achieving global engagement.

The audiences and creative engagement for our work broadened, with **participation in our programs** from artists and ecologists in Australia, Brazil, France, India, Kenya, and the UK!

Responding to COVID-19

During the early months of COVID-19 impacting New York City, Salt Tree Art rapidly transitioned our work to address immediate needs for our communities. We formed an Artist Emergency Fund, issuing immediate bridge grants to local artists, providing them with funding to cover lost wages and artist fees, and allowing them to continue development of creative projects. We also began a Mutual Aid Initiative, leveraging our artists in creating facemasks during the peak months of national PPE scarcity. Salt Tree Art masks were distributed to nurses, ambulance staff, delivery workers, food service providers, and other essential workers throughout the Northeast US, from Maryland to Massachusetts. As part of this initiative, we hosted some of the first online training workshops on facemask production for community groups in New York City.

Left page photo: Still from video performance of "Naturally" by Cherie Chalouhi.

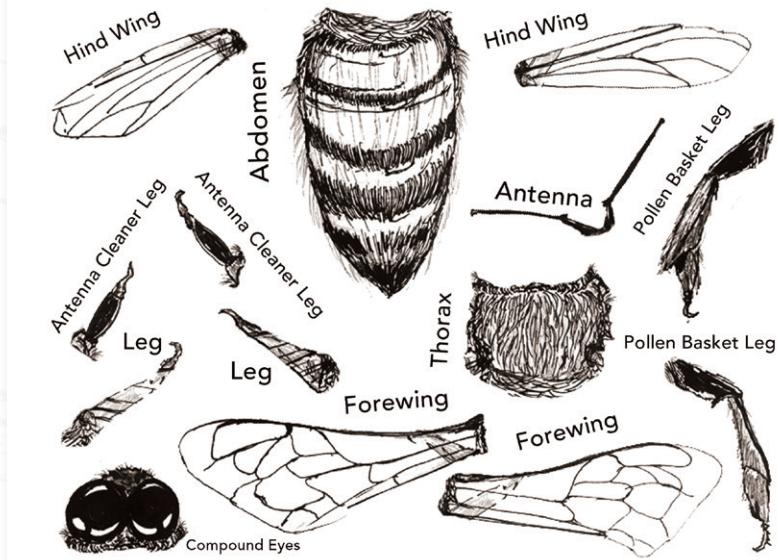
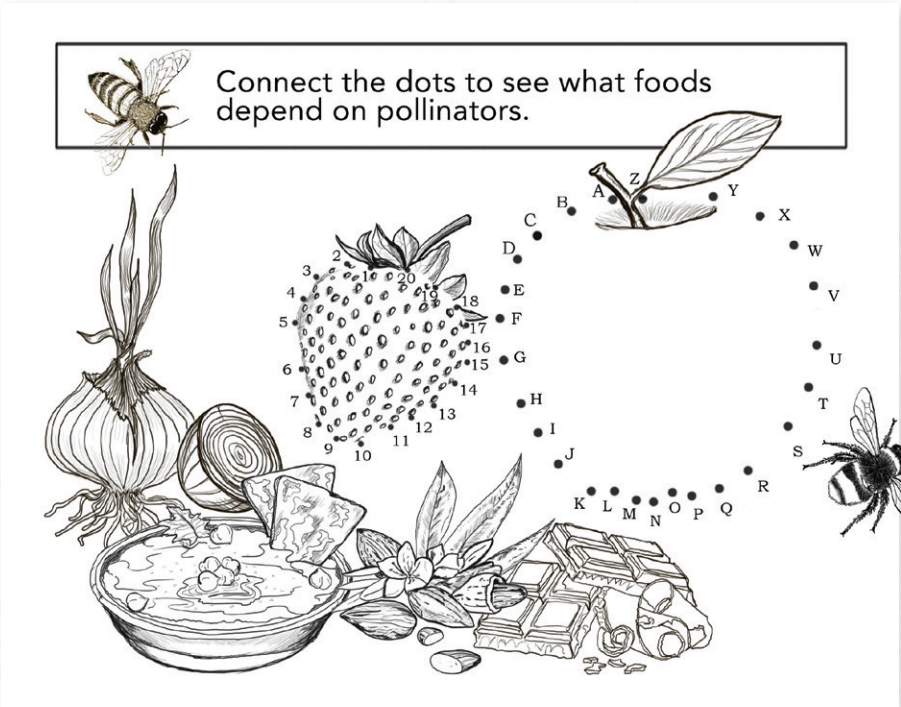
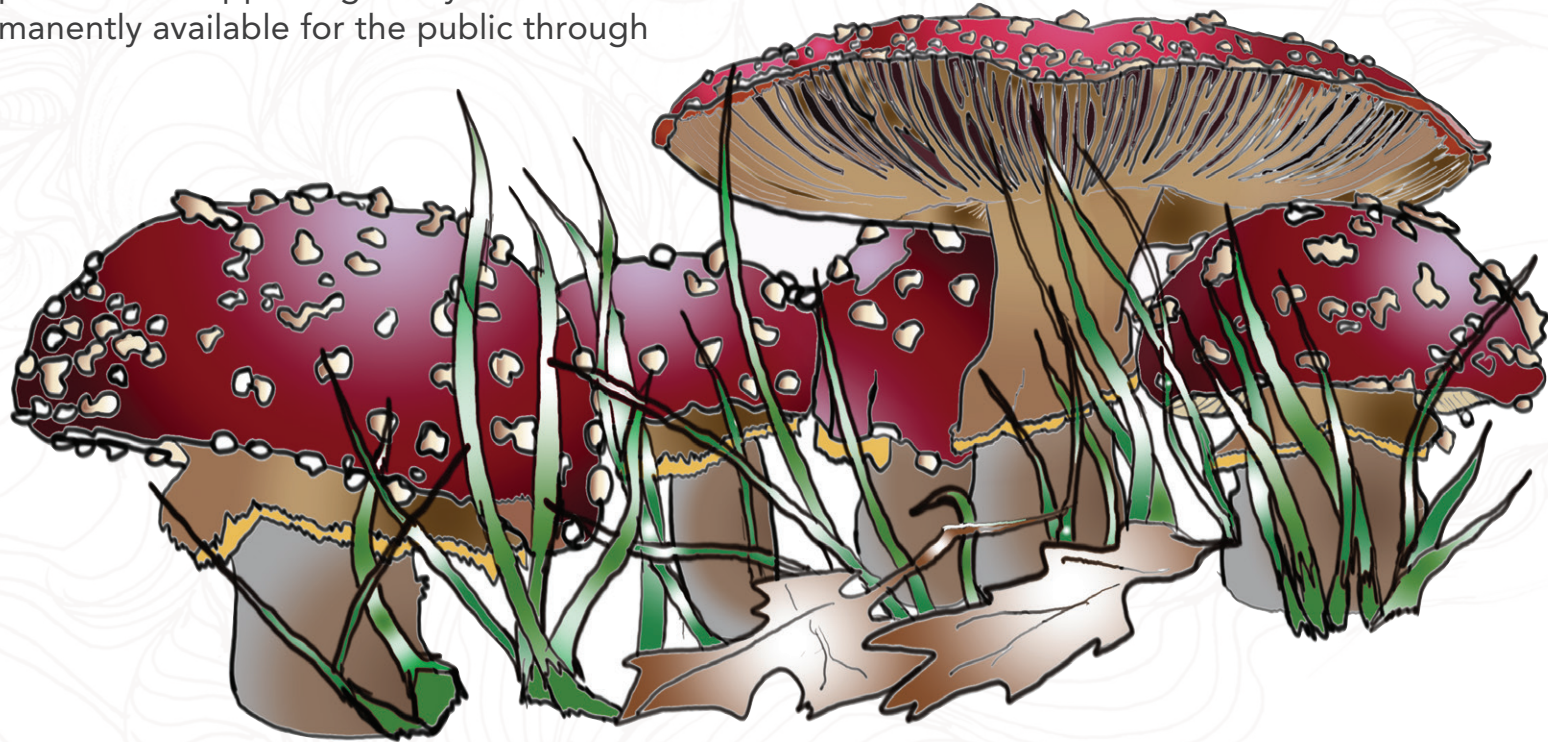
Right page: Salt Tree Art facemasks made of recycled fabrics.



Earth to Sky

With this year’s shift to online education, Salt Tree Art created and published a free environmental learning resource for educators, families, and caregivers. Entitled **Earth to Sky: Connecting with Our Ecosystem**, this robust curriculum provides activities for home-based ecology and arts education through four themed modules: Bees & Other Pollinators, Plants & Our Stories, Mushrooms: Touring the Fungi Kingdom, and Back to Earth: Understanding Our Soil.

Earth to Sky gives learners a deeper understanding of natural ecosystems, focusing on the interconnections between different forms of life and human communities. The curriculum also encourages the learners to discover their potential in supporting ecosystem health. The resource remains permanently available for the public through the Salt Tree Art website.



The avocado seed forms as a pit inside the fruit. The seed travels when people carry it.



The maple seed works like a helicopter. As it falls from the tree, it spins away in the wind.

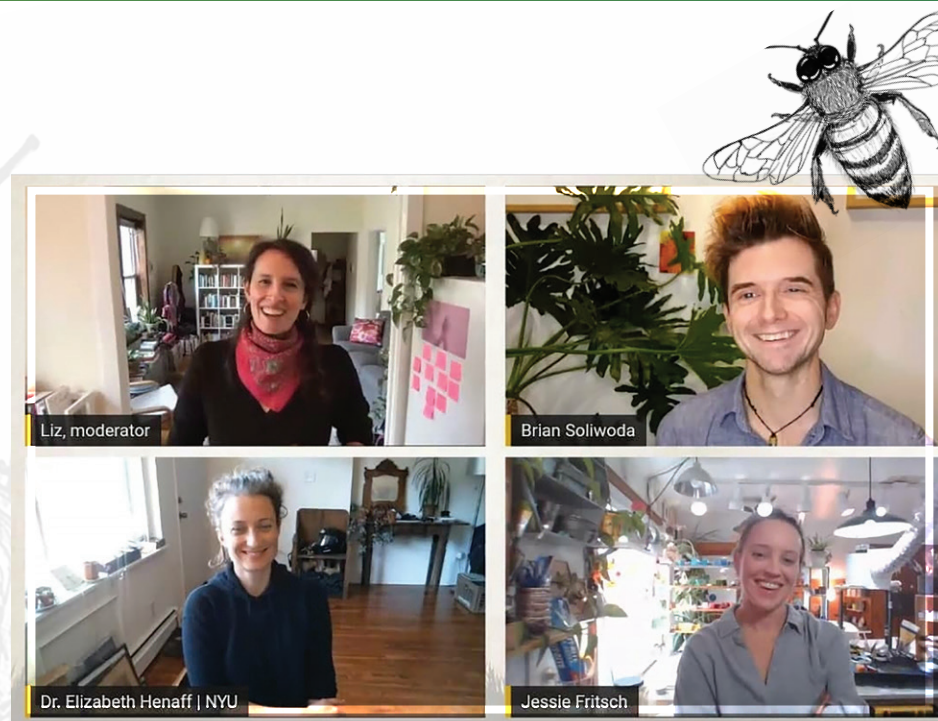
Celebrating Pollinators

Salt Tree Art's annual **Waggle It** dance went digital this year with our first ever livestream for the 50th anniversary of Earth Day. We collected home video submissions of participants performing their best honey bee dances, hosted a remote visit to the rooftop beehives of Astor Apiaries, and held our third annual community waggle!

We continued raising awareness on the importance of pollinators with our **Fall Festoon** digital festival. This event featured a full day of festival activities, including live broadcast discussions with urban beekeepers, environmental artists, and international honey bee advocates. The event also hosted pollinator-themed make-along projects and an online art gallery.

Top: Screenshots from a panel discussion during our Fall Festoon.

Bottom: Remote waggle dancers from our Earth Day event.



A Season of Puppetry

Salt Tree Art produced our first **Eco-Puppetry Festival** as a live broadcast digital event. Viewers from around the globe tuned in to watch 12 ecology-themed puppetry performances from a varied set of artists, ranging from amateur puppet-makers to internationally known puppeteer troupes.

The performances included *Succession*, a new puppetry work from Salt Tree Art's Brian Soliwoda. **Succession** serves as an environmental learning tool, teaching the concept of ecological succession through the "crankie" style of shadow puppetry. In addition to premiering at the Eco-Puppetry Festival, *Succession* also appeared at community events throughout the fall, including a crankie puppetry workshop in which participants built homemade crankies made from materials found around the house! *Succession* will continue to be performed at upcoming Salt Tree Art events in 2021.

Salt Tree Art also began experimenting with edible puppetry, testing rod puppets created entirely from edible organic materials. These puppets will form the base for a new work entitled **What We Eat**, currently under development as part of our continued connection to the puppetry community.

Top: Pine Mountain Puppets sing about soil health.

Center: Shadow puppetry from Katherine Fahey's SEDNA.

Bottom: Smiling Hogshead Ranch worm puppets discuss composting.

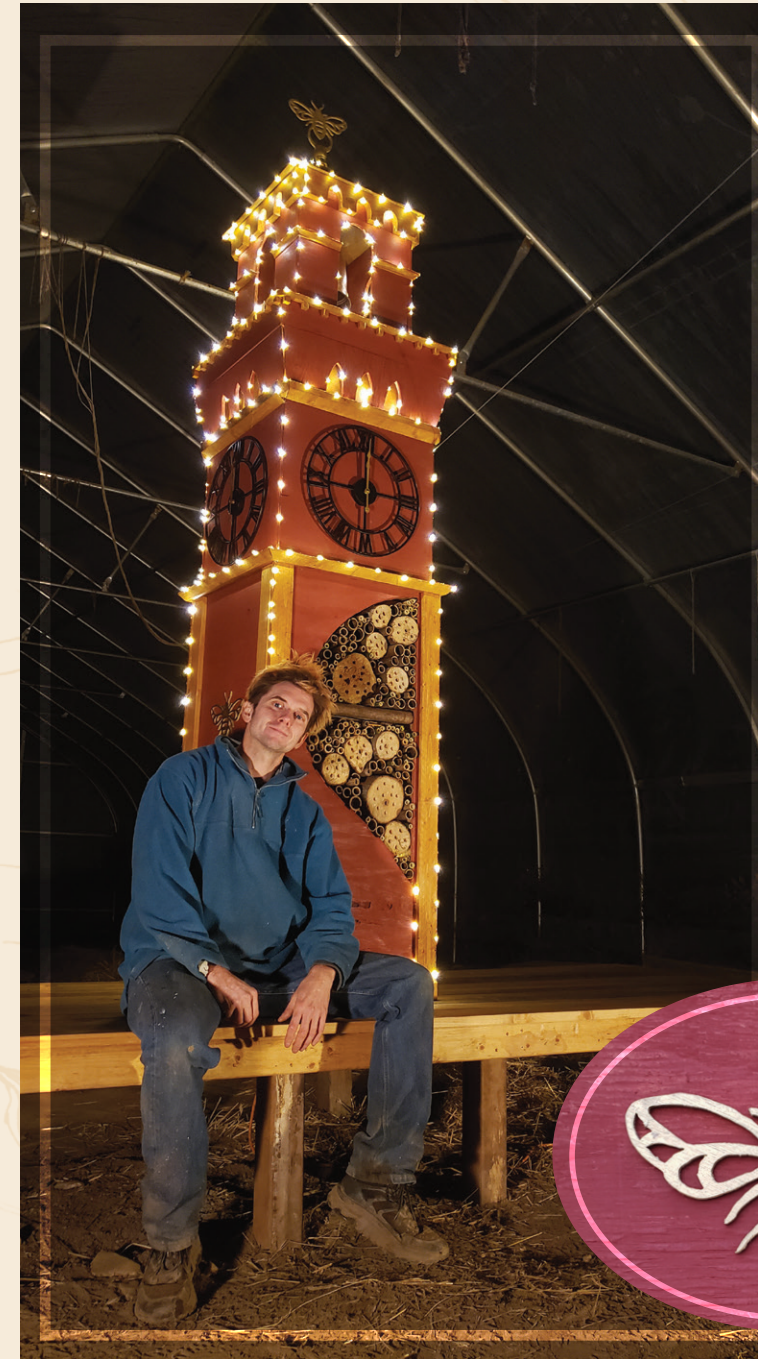
Other 2020 Highlights

Sculptures Old and New

Salt Tree Art concluded the exhibition of **Myco-Rise**, our experimental mushroom sculpture series in New York City. Brian Soliwoda, the project's artistic director, produced a brief documentary on the process and partners involved in realizing the experiment, and Salt Tree Art looks forward to bringing this technique to new spaces over the coming seasons!

We continued conservation for **Home**, a living willow structure in Brooklyn. Now in its fourth year of growth, the willow sculpture forms the centerpiece for a children's area within a community garden, and remained a rare accessible space for art and play throughout the year's COVID-19 quarantines. The sculpture has also been a pilot study for a carbon capture project, assessing the capacity for living sculptural installations to remove atmospheric carbon for a mitigating effect on climate change.

We were delighted to partner with Connecticut's Sun One Organic Farm in constructing **Bees & Nutmeg**, a new work that provides pollinator habitat while giving homage to landmark architecture in Connecticut. The sculpture exhibited as part of the farm's Winter Discovery experience alongside works from other local artists.

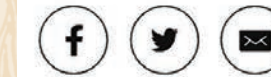


NEWS

In Litchfield County, some towns celebrate the season, each in their own way during the pandemic

Jo Ann Jaacks

Updated: Dec. 7, 2020 4:58 p.m.



Left: Progression of the Myco-Rise mushroom sculptures.
Right: Bees & Nutmeg pollinator habitat sculpture.

Other 2020 Highlights

Building Our Community

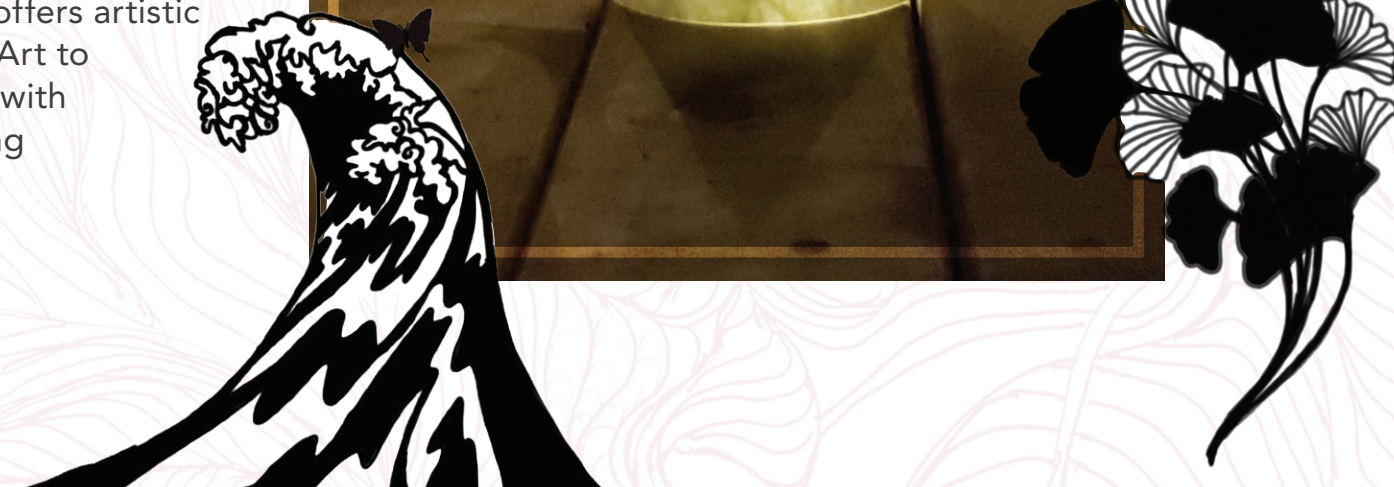
Salt Tree Art launched our season with **Dirt 2020**, a networking event that brought together a diverse collection of artists, horticulturists, community organizers, and other supporters for an evening of performance, discussion, and planning.

We were excited to participate in the **Northeast Organic Farming Association's first digital conference**, our fourth year of bringing Salt Tree Art's innovative concepts to the regional agricultural community. Salt Tree Art co-founder Mike Hollis was invited to speak on the use of regenerative agriculture concepts in urban design, lecturing to an audience of farmers, educators, and urban planners.



We were humbled to be chosen by **Safe Place Productions** as their first nonprofit beneficiary in their new kinetic meditation virtual fundraising series, dancing with new friends while supporting Salt Tree Art's 2021 programs.

Salt Tree Art concluded our season with **Brings to Light**, a project to raise awareness on important environmental topics with calls to action for participants. The project offers artistic votive lanterns created by Salt Tree Art to build a visible community of action, with a lantern-lighting kickoff event during the Winter Solstice.



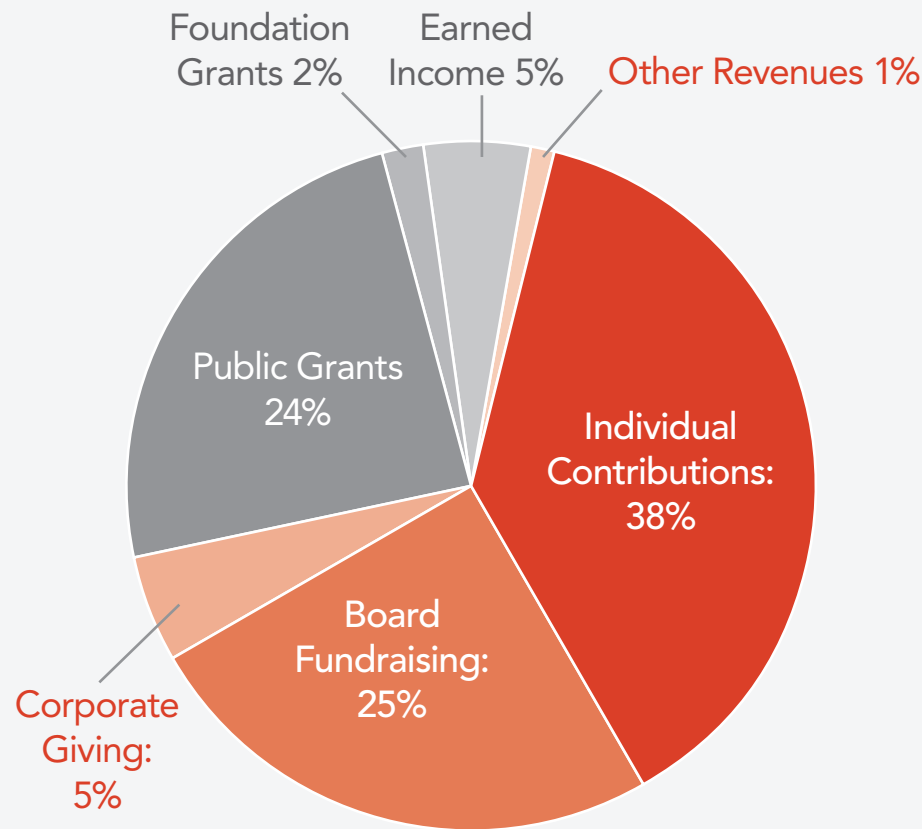
Where We're Going

With the success of our 2020 season, Salt Tree Art is positioned to launch our capital campaign project in the new year. Fulfilling our original vision of a permanent physical space dedicated to environmental art, Salt Tree Art is thrilled to realize this vision through the support of our growing community. The capital project will develop a multi-acre environmental art installation and will host residencies, education programs, and seasonal festivals that celebrate the intersections of art and ecology.



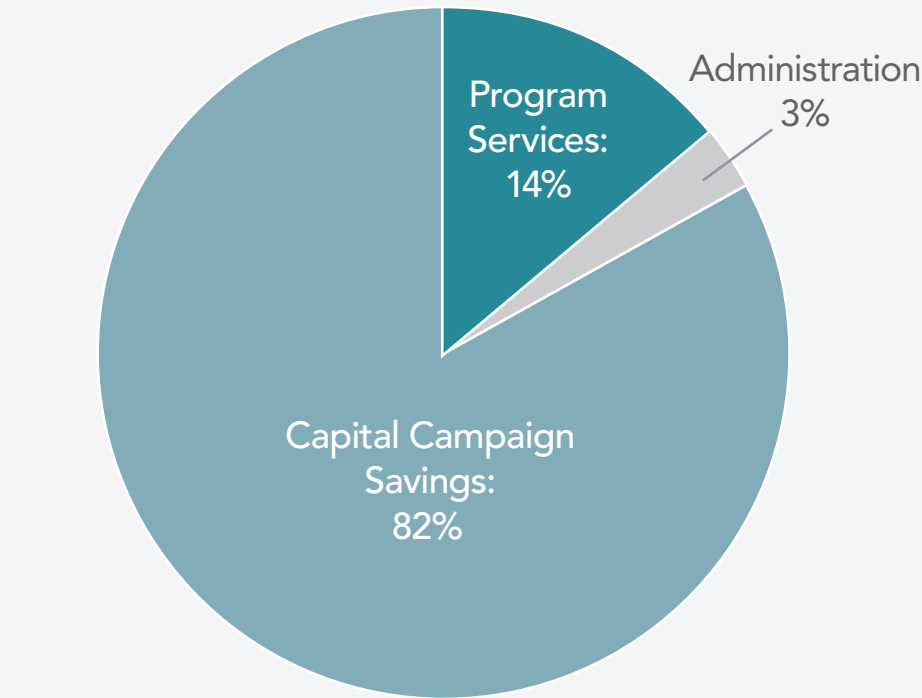
Left: Artist's rendering of future Salt Tree Art physical space.

Sources of Support



Salt Tree Art is proud to have a strong community of support, with 38% of our revenue from individual giving. We also continue to diversify our revenue sources, with corporate giving as a new part of our financial portfolio.

Use of Funds



Salt Tree Art applied much of our 2020 revenue to the pending launch of our capital campaign project. With our volunteer-led, program-focused operations, only 3% of our budget was used for administrative costs. 66% of our program services budget provided direct support for environmental artists!

With Gratitude to Our:

Board of Trustees

Michael Hollis
Liz McCabe
Brian Soliwoda

Advisory Board

Lauren Alzos
Jordan Benke
Cherie Chalouhi
Nicholas Enna
Nora Fitzgerald
Eileen Jurek
Jennifer Jurek
Ashley Rebecca King
Steve Krauss
Graham McCarty
JT McGuinness
Kristen Terrana

Patrons & Grantors

Michele & Charles Hollis
Diane & Tim Soliwoda
Queens Council on the Arts
Jennifer & Matthew Glass
Karen Soliwoda
Gail Cassilly & Joan Newman
Bryant Sterczala
Burning Man Global Art

Supporters

Bill Alzos
Timothy Bolbrock
Arthur Bonhomme
Megan & Art Bookout

Noelle Butler
Corey Buttry
Francesca Cann
RF Caroll III
Trevor Chavin
Fallon Conger
Allison Damboise
Francesa Domenico
Jordann Duffy
Katherine Fahey

Joey Farmery
Anna Fenton-Hathaway
Anthony Ferrier
Jessica Frank
Leah Gautsch
Michelle Harper
Nicole Rivera Hartery

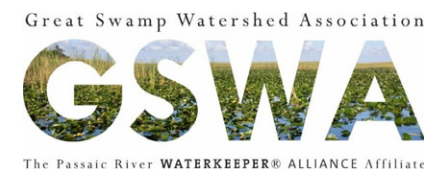
Tina Hawco
Erica Helphand
Nick Hoefly
Helen Ho
Matthew Hollis
Helen Humphries
Patrick Keenan
Evangeline Williams Kelly
Jake Krickhan
Gil Lopez
Vanessa Lugo

Michael Mastroianni
John Mayes
Tony Mayes
Matthew McGloin
Deric McNish
Annabelle Meunier
Michael Moon
Lou Morris
Winifred Nichols
Conor Nickel
Priscilla Perez
Michael Perlman
Jerilyn Perman
Lenka Perron
Barbara Peterson

Sara Peterson
Scott Pidgeon & David Garland
Michelle Pinter-Petrillo
Joseph Polizzi
Christie Quarles
Jed Resnick

Graham Robinson
Jennifer Salinetti
Margaret Sheeche
Magda Soliwoda
Helen Stoddard
Rachel Studley
Elisabeth Toft
Sue Truman
Lauren Ullrich
Victoria Zitrin

2020 Partners





www.SaltTree.art